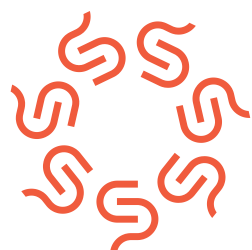




www.poweroad-ess.com



Follow us on LinkedIn



EasyPower.
EVERYONE DESERVES ENERGY

Poweroad Renewable Energy Co., Ltd.

18th Floor, F5 Building, Xiamen Software Park III, Jimei District, Xiamen, Fujian, China 361023

+86 592 5558101

sales@poweroad-ess.com

www.poweroad-ess.com / www.poweroad.com

DISTRIBUTEUR OFFICIEL DE

POWEROAD

contact@easypower.ma

www.easypower.ma



Commercial & Industrial ESS Solutions

Air Cooling / Liquid Cooling



Poweroad Renewable Energy Co., Ltd.

INTRODUCTION

About POWEROAD

Founded in 2001, Poweroad Renewable Energy Co., Ltd. ("POWEROAD") is a high-tech enterprise focusing on the researching & development of lithium batteries and energy storage systems.

Catering to Commercial & Industrial ESS markets, POWEROAD has delivered more than 100 C&I energy storage projects and services globally by applying a complete pre-sales, sales and after-sales service system, with a commitment to make green energy accessible, supplying and connecting people and places all over the globe.

Utilizing advancements in BMS, EMS, and PCS technology, we've delivered our solutions in over 70 countries, amassing 800 MWh deliveries.

Backed by a comprehensive service model, POWEROAD's innovative products energize projects worldwide, including Asia, Oceania, Europe, Africa and South America. We offer a scalable energy storage footprint that can help even the most remote communities, striving to make more contributions towards a greener earth.

 **4GWh+**
Annual Capacity

 **400+**
Employees

 **23,500m²**
Manufacturing Base

 **23 Years**
Experience in Battery Industry

 **150 R&D Staff**
in 5 Centers Nationwide

 **In-house 3-tier BMS**
Own-developed BMS for C&I ESS

 **800+MWh**
Global Projects Completed

Partners

CATL

**KEHUA
TECH**

Sinexcel

DELTA

SCENARIOS



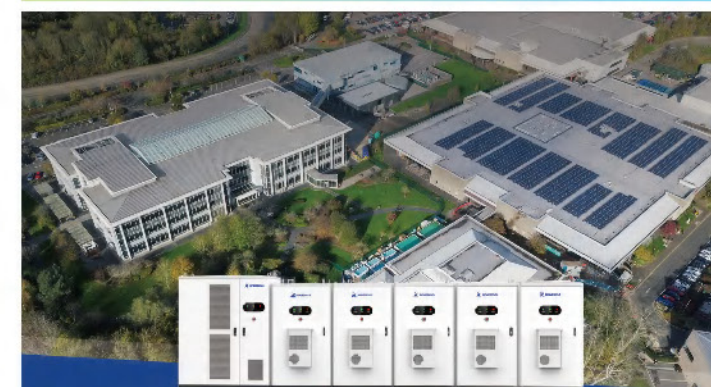
Solar Self-consumption



PV+ESS+EV Charging



Off-grid/Microgrid

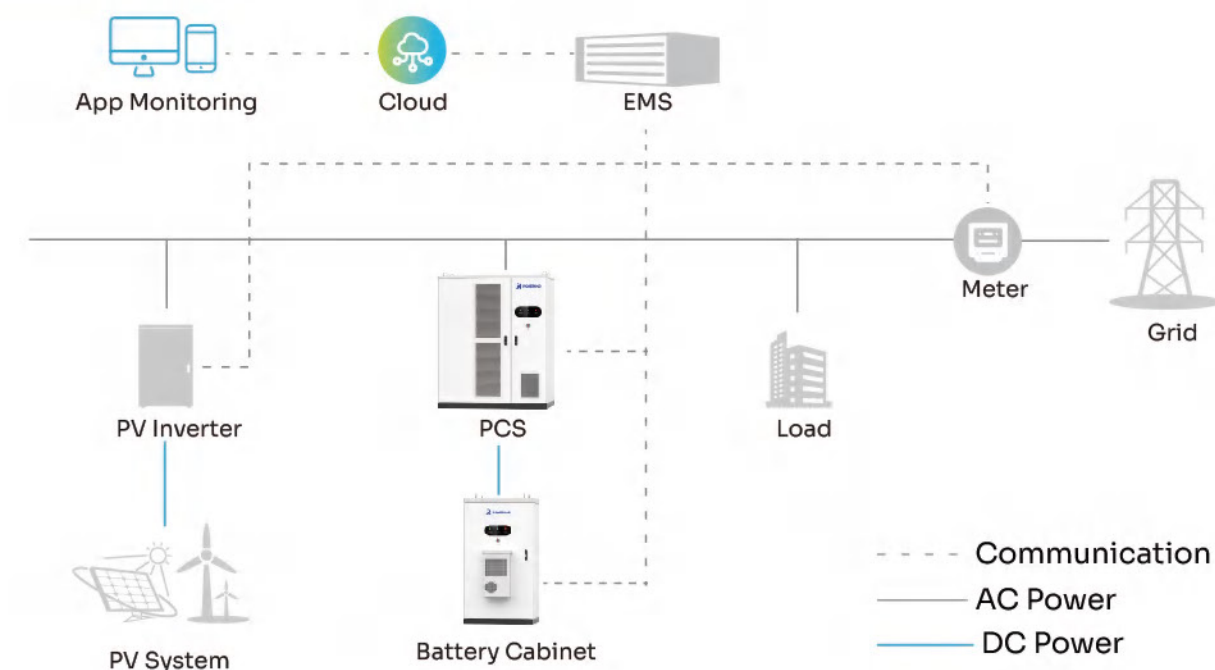


Demand Charge Reduction / Peak-shaving



Frequency Response Services

Topology



FLEX 215 All-in-one

Air Cooling Outdoor Cabinet ESS

TIER
1

Tier-1 LFP Battery Cells

LFP cells with top-level safety



In-House BMS

Own-developed BMS technology that optimizes the performance and lifespan of ESS



Highly Integrated

Battery and PCS are integrated in an all-in-one system



Modular Design

Available for flexible scalable up to 10 batteries



Space-Saving

1.4 m² minimum space required



Easy Installation

Small volume integrated modules in whole-package transportations enable simple installation & relocation



Plug-and-Play

Pre-engineered and pre-tested systems allows plug-and-play on site



Cloud Monitoring

Allows real-time monitoring and remote upgrade



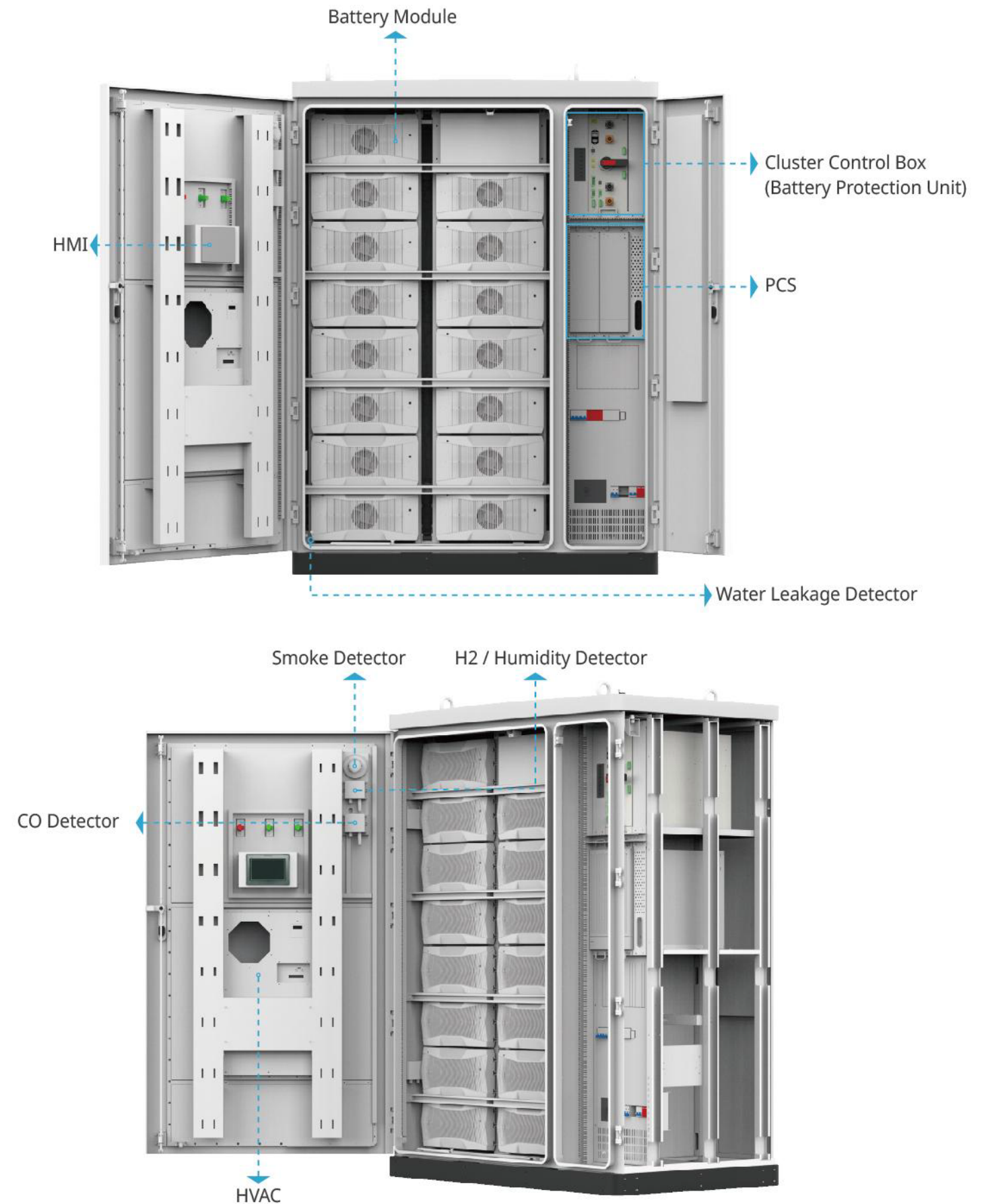
Capable for Harsh Environment

IP55 and C4 anti-corrosion cabinet design for extreme environment such as islands or rainforests

LCOE ↓

ROI ↑

FLEX 215 All-in-one LAYOUT



FLEX 215 All-in-one CONFIGURATION



FLEX 215 (All-in-one) ESS Configuration Suggestion

BATTERY	Number of Battery Cabinet	Battery Capacity (energy)										
	10	2.15 MWh										
	9	1.94 MWh										
	8	1.72 MWh										
	7	1.51 MWh										
	6	1.29 MWh										
	5	1.08 MWh										
	4	860 kWh										
	3	645 kWh										
	2	430 kWh										
	1	215 kWh										
PCS	PCS (Modular)	PCS Power	100 kW	200 kW	300 kW	400 kW	500 kW	600 kW	700 kW	800 kW	900 kW	1000 kW
	Number of PCS module		1	2	3	4	5	6	7	8	9	10

FLEX 215 All-in-one PARAMETERS

Items		Parameters
AC Parameters	Rated Power	100 kW
	Maximum Power	110 kW
	Grid Type	3W+N+PE
	Rated Grid Voltage	400 V
	THDi	≤ 5%
	Grid Frequency	50 / 60 Hz
	EMC & Safety Standards	IEC/EN 62477, EN/IEC 61000
	Grid Connection Standards	EN 50549-1, G99, AS/NZS 4777, VDE 4105 CEI-016, CEI-021, NRS097, C10/11
DC Parameters	Rated Voltage	768 V
	Voltage Range	648 V ~ 864 V
	Rated Capacity	280 Ah
	Rated Energy	215 kWh
	Charge/Discharge Rate	0.5 P
Other Parameters	Degree of Protection	IP 55
	Operation Temperature	-20 ~ 45 °C
	Storage Temperature	-30 ~ 55 °C
	Altitude	≤ 2000 m
	Relative Humidity	≤ 95% (No condensing)
	Cooling Method	Air cooling
	Fire Suppression System	Aerosol
	Communication	CAN / Ethernet
	Dimensions (W × D × H)	1600 x 1000 x 2150 mm
	Weight	2.2 t

